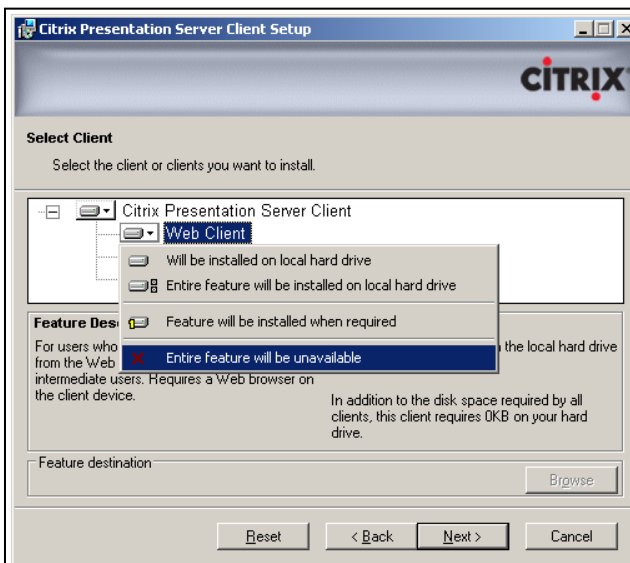


Adding A Citrix Connection

Quick Reference Card

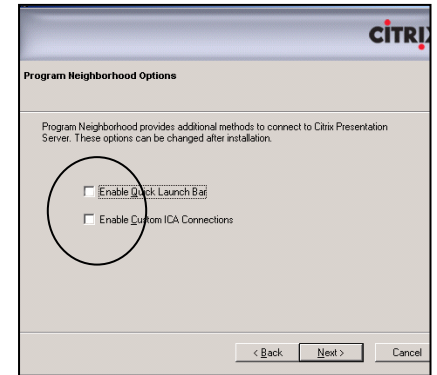
Downloading the Software

1. Close **ALL** programs.
Use Internet Explorer to go to www.techpro.com.
2. Towards top of website, click **Support ► Software** .
3. On **Software** page, click either **Citrix ICA Client for Windows** OR **Mac OS X**
4. At **“Do you want to run or save this file?”** select **Run**.
5. At **“Do you want to run this software?”** select **Run**.
6. Select **English** as language.
7. You will see a **Citrix Installation Wizard** screen which will pause for a minute or so.
8. At the **Citrix “Presentation Server Client Setup** screen”, click **Next**.
9. Read and **accept** the License Agreement. Click **Next**.
10. In the **Select Client** dialog, make the following changes.
 - Under **Web Client** select **Entire feature will be unavailable**
 - Under **Program Neighborhood Agent** select **Entire feature will be unavailable**



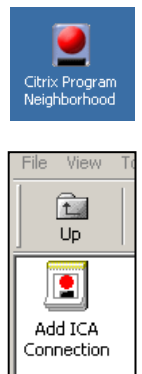
TPW-106-Adding Citrix Connection

11. Click **Next**, **Next**, and **Next** to accept defaults on next three screens
12. Select **NO** in the **Use Local Name & Password** dialog, click **Next**.
13. Remove both checkmarks in **Program Neighborhood Options**. Click **Next**.
14. On the **Installation Summary** screen, click **Next** to begin Setup. *This could take up to five minutes.*
15. Click **Finish** when installation is complete.



Creating the Citrix Icon

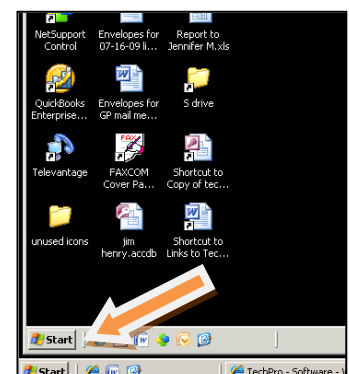
1. Double-click the **Citrix Program Neighborhood** icon that was installed on your desktop.
2. Double-click **Add ICA Connection**.
3. Accept the **Local Area Network** default by clicking **Next**.



(cont'd on next page)

IMPORTANT! When closing a Citrix session, do NOT use the close button (X).

Instead, click START button on the Citrix screen and LOGOFF. This insures the session is closed and enables other users to logon to Citrix.



Adding A Citrix Connection Quick Reference Card

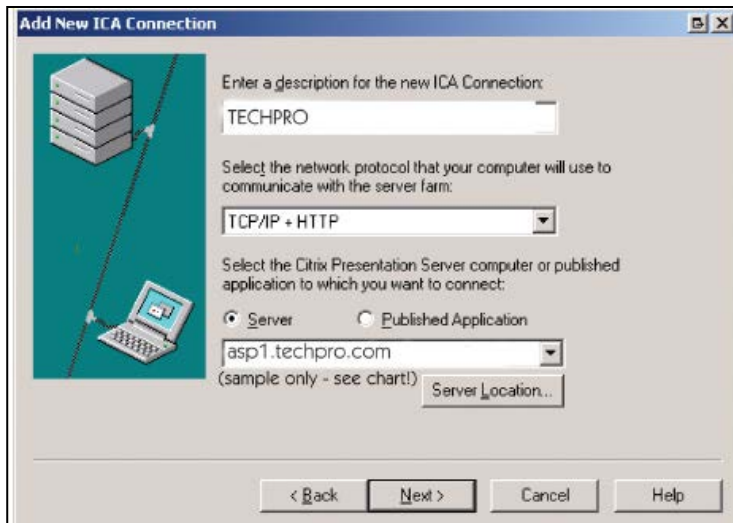
Creating the Citrix Icon (Cont'd) Page 2

4. Complete **Add New ICA Connection** as follows.

Description = Text to identify the Citrix icon such as **TECHPRO**
Protocol = **TCP/IP + HTTP**
Server = **(select one from chart)**

PM04/ EMR 2005	EMR 9.2	PM04/ EMR9. 5	CPS 2006	CPS 9.5	CPS 10	Non- medical	Server
YES							asp1.techpro.com
			YES				asp2.techpro.com
	YES						asp3.techpro.com
						YES	asp5.techpro.com
		YES					Asp8.techpro.com
				YES			asp9.techpro.com
					YES		asp10.techpro.com

Click **Next**.

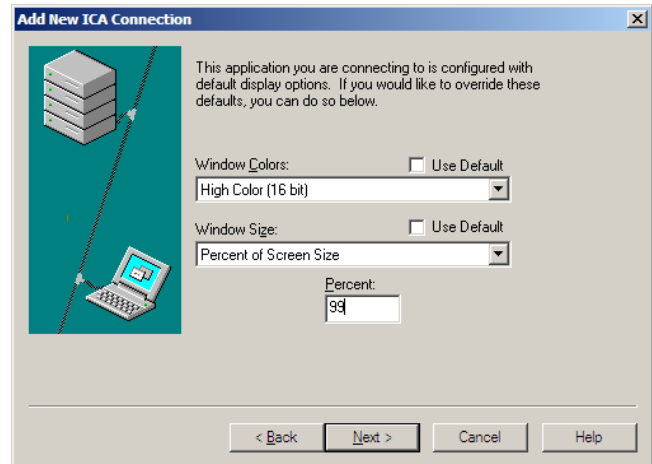


5. At **Encryption Level/Session reliability** dialog, **remove** checkmark in **Enable Session Reliability**. Click **Next**.

6. At **User name/Password/Domain** dialog, accept defaults by clicking **Next**. (Fields are left blank).

7. At next dialog (*shown below*),

- ▶ **Uncheck Use Default**
set **Window Colors** to **High Color (16bit)**.
- ▶ **Uncheck Use Default**
set **Window Size** to **Percent of Screen Size**
Percent to **99**. Click **Next**.



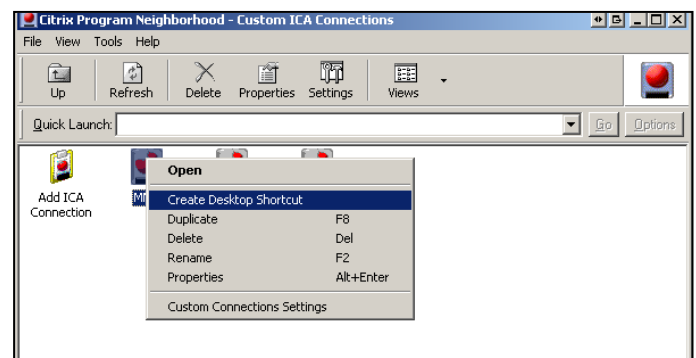
8. At **Application/Working Directory**, accept both defaults (blanks) by clicking **Next** and then **Finish**.

Using Citrix

1. In **Citrix Program Neighborhood** located on your Desktop, **double-click** your new icon to initiate a remote session.

YOU WILL ALWAYS BE PROMPTED to enter your network username/password for security reasons.

2. Create a **shortcut** to your Citrix icon by **RIGHT** clicking on the new icon and select **Create Desktop Shortcut**. The shortcut will appear on your Desktop.



3. **Optional:** you may delete the **Citrix Program Neighborhood** icon from your desktop.